

FFA EXHIBITION HALL CLASSES

GRAIN: Two quarts are necessary for the exhibit. Be sure grain is clean, dry, and FREE FROM FOREIGN MATTER.

Classes: Barley, Wheat, Buckwheat, Oats, Soybeans, Spelt, Rye, Sunflower.

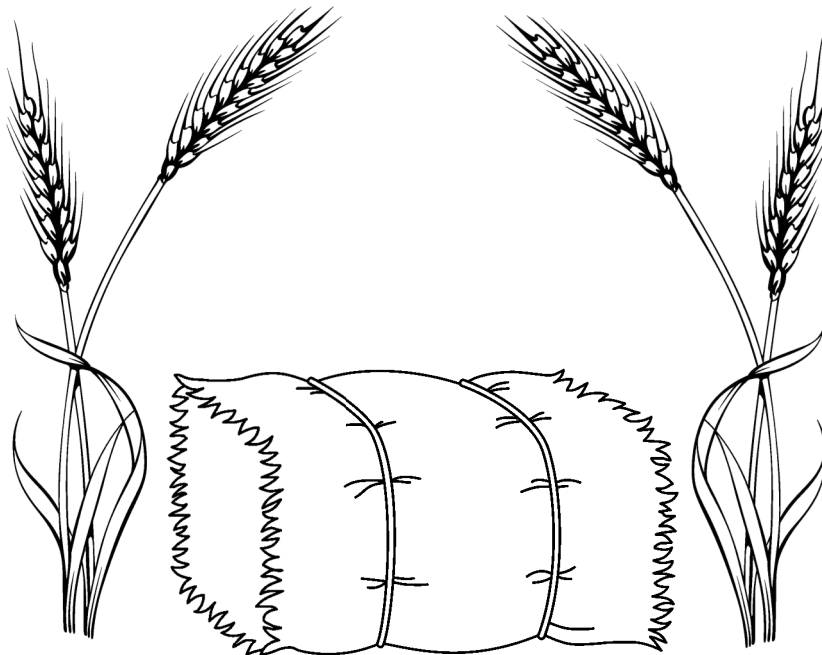
HAY: Long hay only (an exhibit shall consist of a bale section approximately 8" thick).

Classes:

- a. Alfalfa or Alfalfa Grass Mixed first cutting-not more than 50% grass
- b. Alfalfa or Alfalfa Grass Mixed-later cuttings-not more than 50% grass
- c. Other Legumes or Legume Grass Mix--not more than 50% grass
- d. Grass-first cutting-mixtures of timothy and/or other grasses and containing not more than 10% legumes
- e. Grass-later cuttings-mixture of timothy and/or other grasses and containing not more than 10% legumes
- f. Summer annual grasses - sudan grass, sorghum/sudan, hybrid s, etc.

SILAGE: Crops must be named. Exhibits shall consist of ten pounds (large size plastic bags are excellent containers for transporting or showing samples.)

1. Perennial crops - direct cut, with or without preservatives.
2. Perennial crops -wilted or low moisture , with or without preservatives.
3. Annuals other than corn - direct cut, with or without preservatives.
4. Annuals other than com -wilted or low moisture, with or without preservatives.
- a. Corn silage



AG & NATURAL RESOURCES

GENERAL RULES

- Open to all 4-H/FFA members.
- Project book must be completed and reviewed by leader prior to fair.
- Fair exhibit should be a 22x24" poster featuring your experience and learning during the completion of the project, choose a topic from the project book, include at least 1 photo of yourself involved in an activity from the project.

CLASSES

Conservation

Fishing

Orienteering

Environmental Awareness

Forestry

Outdoor Adventures

AG & NATURAL RESOURCES — HERB GARDENING

GENERAL RULES

- Open to all 4-H/FFA members.
- Project book must be completed and reviewed by leader prior to fair.
- All herbs must be grown by the 4-H member and can be exhibited in any form:
 - Fresh Cut - 1 bunch with stems 1 inch in diameter
 - Dried - 1-inch bunch or 3 tablespoons of dried leaves or 1 tablespoon of dried seeds
 - Potted
- Each exhibit must include a label for each herb exhibited.

AG & NATURAL RESOURCES — VEGETABLE GARDENING

GENERAL RULES

- Open to all 4-H/FFA members.
- Project book must be completed and reviewed by leader prior to fair.
- Exhibit should include 3 or more kinds of vegetables, and include labels. Exhibits are judged as a grouping for their overall quality.
- When picking your fruits or vegetables for Fair, pick marketable vegetables. This means choose the vegetables that would bring the highest market price (DO NOT CHOOSE THE LARGEST). Select medium sized specimens. Remember to keep them uniform in size, color, and variety. Try to make sure they are blemish free and are prime—not too young or old. Potatoes should not be washed, just wiped off with a soft cloth.
- Tomatoes should have stems removed. Beats and carrots should have tops trimmed 2 inches.



AG & NATURAL RESOURCES — FLOWER GARDENING

GENERAL RULES

- Open to all 4-H/FFA members.
- Project book must be completed and reviewed by leader prior to fair.
- Exhibits must be cut flowers grown by the exhibitor. You will need 3 blooms if the bloom size is up to 4 inches; anything over 4 inches you will need only 1 bloom.
- Exhibits may include up to 10 varieties (a minimum of 3 is required), placed in separate vases and labeled.
- Exhibits are judged as a grouping for their overall quality.
- When selecting flowers for the fair, look for uniformity. Choose flowers that are the same color, size, and make them the same height. Also try to select flowers that are at their prime—this is right after they open fully when they have the best color with no petals missing. Make certain that your flowers do not have blemishes and do not look old and faded. Make certain that they are all the same variety. These are things that the judges look for. You may display your flowers in any little container (baby food jars, jam jars, medicine bottles, etc.) The container is not going to be judged.

AG & NATURAL RESOURCES — CONTAINER GARDENING

GENERAL RULES

- Open to all 4-H/FFA members
- Project book must be completed and reviewed by leader prior to fair.
- Exhibit a dish garden or a terrarium

AG & NATURAL RESOURCES — LANDSCAPE GARDENING

GENERAL RULES

- Open to all 4-H/FFA members
- Project book must be completed and reviewed by leader prior to fair.
- Exhibits must include 3 varieties grown by the exhibitor, placed in separate vases and labeled, along with a poster showing a drawing of the garden plan and a photo of the finished garden.



ANIMALS — EMBRYOLOGY

GENERAL RULES

- Open to all 4-H/FFA members.
- Project book must be completed and reviewed by leader prior to fair.
- Fair exhibit should be a tri-fold poster featuring your experience and learning during the completion of the project, include pictures.

ANIMALS — ENTOMOLOGY

GENERAL RULES

- Open to all 4-H members.
- Project book must be completed and reviewed by leader prior to fair.
- Unit I - 25 species of insects of 5 orders promptly mounted and labeled
- Unit II - 50 species of insects of 9 orders properly mounted and labeled

ANIMALS — HORSELESS HORSE

GENERAL RULES

- Open to all 4-H members
- Project book must be completed and reviewed by leader prior to fair.
- Fair exhibit should be a 22x24" poster featuring your experience and learning during the completion of the project, choose a topic from the project book, include at least 1 photo of yourself involved in an activity from the project.

ANIMALS — PET CARE

GENERAL RULES

- Open to all 4-H members.
- Project book must be completed and reviewed by leader prior to fair.
- 4-H Dog Club members are excluded from this section, and should complete requirements as stated in the Dog section of this book.
- Exhibit will include a poster and project animal — These animals do not stay at the Fair - bring animals for green building judging only (Tuesday 8:45 AM). Poster should be set up during any of the project registration times. 4-H members should stay for questions from the judges. Upon completing interview with the judge, 4-H members should exit the green building with their project animal, but leave exhibit materials.
- ALL ANIMALS FOR PET CARE must be kept under control (leashes, cages, carriers, etc.).

CLASSES

Dog

Cat

Pocket Pals

ANIMALS — REPTILES & AMPHIBIANS

GENERAL RULES

- Open to all 4-H members.
- Project book must be completed and reviewed by leader prior to fair.

PROJECT COMPLETION REQUIREMENTS

- Tri-fold poster with pictures and a brief history of project animal
- Story
- Food chart
- Expenses chart
- Display (ie. enclosure with accessories)

FAIR INSTRUCTIONS

- Exhibit/Display should be set up during any of the project registration times.
- These animals do not stay at the Fair - bring animals for green building judging only - Tuesday 8:45 AM.
- All animals must be kept in cages, carriers, etc.
- 4-H members should stay for questions from the judges. Upon completing interview with the judge, 4-H members should exit the green building with their project animal, but leave exhibit materials.

ANIMALS — VET SCIENCE

GENERAL RULES

- Open to all 4-H/FFA members.
- Project book must be completed and reviewed by leader prior to fair.
- Fair exhibit should be a 22x24" poster featuring your experience and learning during the completion of the project, choose a topic from the project book, include at least 1 photo of yourself involved in an activity from the project.

ANIMALS — WILDLIFE

GENERAL RULES

- Open to all 4-H/FFA members.
- Project book must be completed and reviewed by leader prior to fair.

CLASSES

Wildlife is All Around Us - On a 22x24" poster board, draw or have a photograph of a form of wild life. Around this illustration, place dried samples of its normal food in summer, fall, spring, and winter. Alternative: drawings or photographs of animals' habitat in the four seasons

Wildlife is Ecologist - On a 22x24" poster board, illustrate a food web, pyramid, or chain for a common form of wildlife with cut-out pictures, drawings, or photographs.

Wildlife Manager - Three-sided poster - specifics described under "Project Completion Ideas" in the project book.

CREATIVE ARTS — CAKE DECORATING

GENERAL RULES

- Open to all 4-H members.
- Project book must be completed and reviewed by leader prior to fair.
- Decorated Cake (follow requirements in book).

CLASSES

Beginner (1-2 years in project)

Intermediate (3-4 years in project)

Advanced (5+ years in project)

CREATIVE ARTS — DRAWING, FIBER & SCULPTURE

GENERAL RULES

- Project book must be completed and reviewed by leader prior to fair.
- Each article must have been made by a 4-H club member within the current year.
- See project book for details on exhibits for fair.

CREATIVE ARTS — PAINTING, PRINTING & GRAPHIC DESIGN

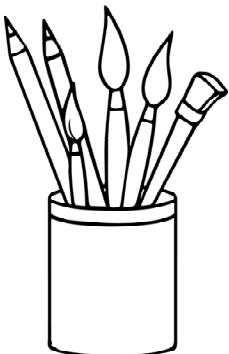
GENERAL RULES

- Project must have been made by a 4-H club member within the current year.
- Project book must be completed and reviewed by leader prior to fair.
- See project book for details on exhibits for fair.

CREATIVE ARTS — PHOTOGRAPHY

GENERAL RULES

- Open to all 4-H members.
- Project book must be completed and reviewed by leader prior to fair.
- Submit your best 4x6 or 5x7. There will be no cropping of pictures.



CREATIVE ARTS — SCRAPBOOKING

GENERAL RULES

- Project must have been made by a 4-H club member within the current year.
- Self-Determined project book must be completed and reviewed by leader prior to fair.

CLASSES

Level 1 - Display at least 5 double or 10 single page scrapbook including the following:

- 1 page featuring animals
- 1 page featuring a seasonal theme
- 1 page featuring 4-H projects.
- The remaining pages may be anything the 4-H leader chooses. Must include 3 types of lettering (stickers, handwriting, stencils, stamps, etc.)

Level 2 - Display a minimum of 15 single pages for completed scrapbook with the following:

- Expanding on 1st year scrapbook project in regards to writing, documenting, and journaling.
- Expanding on the first in regards to embellishments and design.
- No premade scrapbooking kits may be used.

CREATIVE ARTS — CRAFTS

GENERAL RULES

- Each article must have been made by a 4-H club member within the current year.
- A Self Determined project book along with seven activity sheets must be completed and reviewed by leader prior to fair.
- Exhibits are limited to 1 article in each class, unless items are a set. This includes Tie-dye and Glass Etching.
- Some classes will have subcategories based on the years of involvement**
 - Beginner (1-2 years in project)
 - Intermediate (3-4 years in project)
 - Advanced (5+ years in project)

CLASSES

Basket Weaving	Folk Art Painting	Stepping Stone
Candy Making (3 pieces)	Glass Etching**	String Art**
Canvas Painting	Jewelry Making	Tie-Dye**
Ceramics**	Leather Craft	T-Shirt Painting
Duct Tape	Metal Punch	Wood Burning
Fairy Garden (all types)	Mini Scrapbook	Wreath Making
Flower Arranging	Paracord	Create Your Own

CREATIVE ARTS — COLLECTIONS

GENERAL RULES

- Open to all 4-H members.
- Project book must be completed and reviewed by leader prior to fair.
- Limited to one hobby/collection per person. Entries will be limited to inanimate objects.
- *This is a youth exhibit, we strongly encourage youth to complete as much of the setup as possible.*
- Display must consist of at least 5 items. — No weapons are permitted as part of any hobby or collection.

CREATIVE ARTS — WOODWORKING

GENERAL RULES

- Project book must be completed and reviewed by leader prior to fair.
- Project must have been made by a 4-H club member within the current year.
- See specific project books for details on exhibits for fair.

PROEJCT LEVELS

Measuring Up - measuring, squaring, using hand and coping saw, sanding, nailing, screwing, applying penetrating finish

Making the Cut - bevel cutting, using scroll/jig saw, drilling, bolting, gluing, painting or varnishing

Nailing It Together - miter or bevel cutting, lathing, dadoing, rabbeting, staining, using dowel joint

Finishing Up - routing, mortise and tenon joint, miter or bevel cutting, dadoing, rabbeting, planing

FAMILY & CONSUMER SCIENCES — FOODS

GENERAL RULES

- Items must be made by a 4-H club member who is enrolled in a 4-H foods project within the current year.
- Project book must be completed and reviewed by leader prior to fair.
- Food must be displayed on a disposable plate covered with plastic.
- Poster and score sheet must be submitted during registration; however the actual food item may be delivered Tuesday morning by 8:45 a.m.

CLASSES

Snack Attack (Beginner)

Choice of:

- Three oatmeal muffins
- Popcorn trail mix (1 cup) in a clear glass covered food container
- Three peanut butter cookies

Poster of 1 of the following topics: nutrient dense foods, choosing fruits and vegetables, reading a nutrition label, snack selection, record of your physical activity for a week, including time spent and type of activity

FAMILY & CONSUMER SCIENCES — FOODS (CONTINUED)

Cooking 101 (Beginner)

Choice of:

- Three granola bars
- Two pieces cornbread or two cornbread muffins
- One coffee cake or one-layer quick mix yellow cake
- Two brownies
- Three peanut butter cookies or oatmeal drop cookies

Poster of one of the following topics: MyPlate, sugar in soft drinks, using and cleaning electrical equipment, microwave safety, setting the table, salad preparation

Science Fun w/ Kitchen Chemistry (Beginner)

Poster on one of the 11 food experiments in the project book, include your observations and/or your results on the poster.

Grill Master (intermediate)

Poster of one of the following topics: starting a charcoal grill, starting a gas grill, using a meat thermometer, sauces and marinades, packing tips for grilling off-site, preparing a meal on a grill

Notebook or collection of 5-10 recipes you have prepared in your project.

Beyond the Grill (Intermediate)

Poster of one of the following topics: how to pack a cooler, an outdoor foods safety topic, outdoor party preparation timeline

Notebook or collection of 5-10 recipes you have prepared in your project, include at least one dutch-oven recipe.

Cooking 201 (Intermediate)

Choice of:

- One any-size loaf of one of the following variations of the basic quick bread: apple, banana, carrot-orange, orange nut, or whole grain. (The breads do not need to contain nuts).
- Three cheese muffins without bacon
- Two biscuits
- One 9"x9" banana snack cake
- One 8"x8"x2" funny cake
- Four snickerdoodle cookies

Poster of one of the following topics: meal planning, cooking with ground beef, buying fruits and vegetables, reading a food label

FAMILY & CONSUMER SCIENCES — FOODS (CONTINUED)

Cooking 301 (Intermediate)

Choice of:

- Three of one type of shaped roll, such as: bowknots, cloverleaf rolls, coils, crescents, fantans, figure-eights, horseshoes, lucky clover, Parkerhouse rolls, pinwheels, twin rolls, or twists using the basic dinner roll or whole wheat roll recipe
- Two soft pretzels
- One loaf of basic bread or white batter bread
- One round (or square) of cinnamon rolls (8" or 9" round or square cake pan) with icing
- One cinnamon twist or Swedish tead ring
- One loaf (any type) of bread made in a bread machine
- One layer of one of the following cakes (not frosted): white cake, chocolate cake, oatmeal cake, or carrot cake

Poster on one of the following topics: outdoor cooking, slow-cooking, yeast breads, types of flour, types of grain, making butter, or kitchen equipment.

Cooking 401 (Advanced)

Choice of:

- One loaf of one of the following: German dark rye, French bread, or other yeast bread
- Four pieces of one type of candy: cashew brittle, microwave peanut or pecan brittle caramels, marshmallow fudge, or toffee
- One small pastry tart (without filling) or four strips of baked pastry exhibited on a salad size paper plate
- One angel food cake, any flavor, without frosting or icing

Poster on one of the following topics: cooking with a double boiler, cooking beans and peas, moist heat cooking methods, dry heat cooking methods, stir-frying, or fruit selection

Breads Around the World (Advanced)

Choice of:

- One loaf or round bread made from a recipe that originates outside the U.S. (attach recipe)
- Three rolls from one of the following: pretzels, tortillas, etc. from a recipe that originates from another country or culture (attach recipe)

Poster on a specific bread and information about the country or culture the bread represents (include recipes on poster)

Global Gourmet (Advanced)

Poster featuring your experience and learning during the completion of the project, be sure to include pictures with at least 1 photo of yourself involved in an activity from the project.

FAMILY & CONSUMER SCIENCES — TEXTILES
--

GENERAL RULES

- Each article must have been made by a 4-H club member within the current year.
- Project book must be completed and reviewed by leader prior to fair.

SEWING

Beginner (*Sew Much Fun, Sew Much More, Stitch by Stitch*)

Intermediate (*Knits, Coordinates, Accessories, Time Saving Sewing, Sewing for Other People, Create Your Own*)

Advanced (*Tailoring, Formalwear, Design*)

TEXTILE ARTS

Weaving

Crocheting

Knitting

Self Determined (cross stitch, embroidery, latch hook, other needlework)

DESIGN

Wardrobe Planning

- Exhibit ensemble with three garments and three accessories
- Include poster with photos of wardrobe combinations and closet organization

Closet Connections

- Exhibit ensemble with three garments and three accessories
- Include poster with before and after photos of closet organization

QUILTING

Exhibit will consist of one of the following projects specified under each class.

Beginner - Simple blocks using squares, rectangles; simple applique or paper piecing; rag quilt

- Quilt block, Hand or machine pieced (unfinished, not quilted)
- Table runner, placemat, small quilt or other item, tied, hand quilted or machine quilted

Intermediate - Blocks using triangles and bias edges; items with sashing, borders, cornerstones, etc.

- Quilt idea book, file, or box that includes photographs, magazine clippings, descriptions, and/or sketches
- Quilt, Pieced, applique OR other technique, any size, tied, hand quilted or machine quilted
- Wall hanging or other small item, pieced, applique OR other technique, tied, hand quilted or machine quilted

Advanced - Demonstrates advanced skills, such as: y-seams, curved piecing, or complex piecework. May include whole cloth quilts, cathedras window, trapunto, sashiko, and other embellishments.

- Quilt or other item with one or more advanced techniques, hand or machine quilted

FAMILY & CONSUMER SCIENCES — BABYSITTING

GENERAL RULES

- Open to all 4-H members carrying 4-H Babysitting project. Age appropriate project for 10-19 years old.
- Project book must be completed and reviewed by leader prior to fair.
- Will be scored on the following items: Babysitter's kit and safety poster

PERSONAL DEVELOPMENT

GENERAL RULES

- Open to all 4-H members in any of the following projects
- Project book must be completed and reviewed by leader prior to fair.
- Fair exhibit should be a 22x24" poster featuring your experience and learning during the completion of the project, choose a topic from the project book, include at least 1 photo of yourself involved in an activity from the project.
- Individuals completing the Public Speaking project should be present for judging on Tuesday, 9 AM to present speech.

CLASSES

Citizenship	Leadership	Public Speaking
Health	Personal Finance	Service Learning

GENERAL PROJECTS — SELF DETERMINED

The self-determine project allows the 4-H member freedom to determine project area of the member's choice, objectives or goals the member wishes to attain, methods of operation and of carrying on the project work, ways of reporting accomplishment toward goals. 4-H members may take a different direction or expand an already existing project, or they may develop a plan for a project not currently offered by Mifflin County 4-H / Penn State Extension.

GENERAL RULES

- Open to all 4-H members
- Project book, along with 7 educational activity sheets, must be completed and reviewed by leader prior to fair.
- Fair exhibit should be a 22x24" poster featuring your experience and learning during the completion of the project, choose a topic from the project book, include at least 1 photo of yourself involved in an activity from the project.



SCIENCE, ENGINEERING & TECHNOLOGY — ROCKETRY

GENERAL RULES

- Open to all 4-H members.
- Project book must be completed and reviewed by leader prior to fair.
- Fair exhibit should include rocket and a poster featuring your experience and learning during the completion of the project, include at least 1 photo of yourself involved in an activity from the project.

SCIENCE, ENGINEERING & TECHNOLOGY — JUNK DRAWER ROBOTICS

GENERAL RULES

- Open to all 4-H members.
- Complete appropriate section of the Youth Robotics Notebook.
- Exhibit one project at fair. Each exhibitor is limited to one entry.

SCIENCE, ENGINEERING & TECHNOLOGY — ENGINEERING

GENERAL RULES

- Open to all 4-H members.
- Each exhibitor is limited to one entry per project.
- Project book must be completed and reviewed by leader prior to fair.
- Fair exhibit should be a 22x24" poster featuring your experience and learning during the completion of the project, choose a topic from the project book, include at least 1 photo of yourself involved in an activity from the project.

CLASSES

Electricity - Any article made as a part of the project

Small Engines - Exhibit a phase of project and completed project book

SCIENCE, ENGINEERING & TECHNOLOGY — GEOLOGY

GENERAL RULES

- Open to all 4-H members.
- Project book must be completed and reviewed by leader prior to fair.

CLASSES

Beginner (First Year) - 10 labeled rocks, minerals, or fossils

Intermediate (Second Year) - 20 labeled rocks, minerals, or fossils

Advanced - 30 labeled rocks, minerals, or fossils

