

GENERAL FAIR RULES

1. Any animals showing signs of sickness or disease will be disqualified and removed from the Fairgrounds.
2. All exhibitors must take 100% proper feeding and care of their animals while at the fair.
3. All 4-H Exhibitors will exhibit in a 4-H shirt or the sponsored Fair shirt. All 4-H Exhibitors will sell their animal wearing the sponsored Fair shirt. Failure to do so results in disqualification!
4. 4-H will not provide show harnesses; all exhibitors must supply their own.
5. No dogs are permitted on the fair grounds, with the exception of service dogs. 4-H/FFA project dogs are permitted only for the day of the show. No project dogs are permitted in the barns.
6. Any member not present to show their animals will be ineligible to sell that animal. This animal will be asked to leave the grounds immediately following the show.
7. If the exhibitor cannot show/sell the project animal due to a personal medical reason, he/she will not be eligible for the showmanship competition but will be eligible to use a substitute showman for the type competition and the sale.
8. If an exhibitor cannot handle his/her animal they will be disqualified from the show and sale and they will be asked to remove the animal from the fairgrounds.
9. All bedding must be of straw, shavings, or sawdust. No paper bedding.
10. Music is permitted in the livestock area with mutual respect, but it must be appropriate and not interfere with others. Music will be turned off during all livestock shows.
11. All fitting of animals must be done in the designated location assigned by the Fair Committee, leaders will pass on the information at the Fair.
12. No Shockers.
13. No water battles in the barn.
14. Steer members must be enrolled by Dec. 31. Dairy feeder members must be enrolled by March 1.
15. Hogs, Sheep, Goats, Rabbit, Poultry, and Dairy members must be enrolled by March 31.
16. See club rules and fair book sections for detailed project rules.
17. Clubs who provide premiums for rate of gain are expected to find their own sponsors and provide the information to the fair committee no later than April 16.

SHOWMANSHIP

Any member that completes project requirements but animal fails to make weight, with exception to beef club, may show in the showmanship competition using another members animal, with the leader advising this choice.

CLASSES

First Year Showman

Junior Showman (9 to 11 years old)

Intermediate Showman (12 to 14 years old)

Senior Showman (15 to 18 years old)

Advanced Showman (FFA - 19 to 21 years old)

CHAMPION PHOTOS

Livestock showmanship and breed champion pictures will be taken at each show.

All Club members with Grand & Reserve Champion Animals, will also be photographed during the Livestock Sale with their Buyers.

CAMPING POLICY

The Mifflin County Youth Fair Board **STRONGLY DISCOURAGES** campers or tenters from setting up at the Youth Park. Campers/tenters may **NOT** set up camp without prior approval from the Mifflin County Youth Fair Board. For more information concerning the Youth Fair camping policy, please refer to June 15, 1992, Fair Board minutes, available in the Extension Office.

YOUTH OVERNIGHT POLICY

There are no 4-H or FFA members permitted to stay overnight at any time.

OVERNIGHT BARN POLICY

There will be two adults designated as barn monitors to help watch over the animals during the overnight hours. These monitors must be approved and assigned in advance by the fair committee.

GUIDELINES FOR CARE OF ANIMALS

1. It is the responsibility of each exhibitor to care for animals in a manner that is responsible and ethical. Following are some guidelines for the treatment of animals exhibited at the show:
 - A. Restraining Animals
 - i) Animals should be tied or penned in a manner that will not hurt the animal or restrict breathing.
 - ii) Animals should be tied that all 4 feet are firmly on the ground and they have enough room to stand comfortably and lie down.
 - iii) Animals should be tied that they are not going to injure animals tied near them.
 - iv) Animals unaccustomed to each other should not be penned together.
 - B. Handling—Any type of rough handling which could harm the animal is prohibited. The use of whips, canes, and show sticks should be restricted to showing only and then be used only to guide the animals, not to punish. Remember, animals will respond quicker and better to quiet, gentle handling than loud, rough handling.
 - C. Bedding—All animals should have bedding that is dry and clean. Pens should be cleaned regularly to keep animals clean and comfortable.
 - D. Feeding and Water—Animals should be well fed and have access to clean water regularly. Realizing that many market animals must have restricted amounts of feed to maintain the proper weight, animals must be fed adequate amounts of feed to meet basic requirements. Animals not allowed reasonable access to feed and water will be disqualified from the show.
 - E. Transportation—Animals need to be transported in a way that is both safe and considerate.
 - F. Health—It is the responsibility of the exhibitor to provide proper health care for the animals. Improper use of drugs is prohibited. If medication is indicated, be sure to follow label directions and allow for withdrawal time.

FFA GENERAL RULES

1. The Mifflin County Youth Fair Board, the Big Valley FFA., and the Mifflin County FFA Association are not responsible for accidents, loss, or damage by water, fire, theft, or otherwise, whatever may be the cause or extent of any damage or loss of items exhibited.
2. Reasonable care in protection will be provided , however, the police are on duty in the main exhibit building from 11:00 PM to 7:00 AM.
3. The decision of the judges shall be final in all cases, except where mistakes, fraud, or misrepresentation are discovered.
4. The EXHIBITOR is responsible to make it known to the fair personnel the proper name of the article or breed of livestock they are entering. Every exhibit must be given an entry tag showing: the name of exhibitor, chapter, breed, and class.
5. An exhibitor shall not receive more than one premium in any department, class, or subdivision of a class except as provided for by the specific rules of a department, class, or subdivision of a class.
6. In addition to their own regulations, FFA members will follow the 4H Rules & Guidelines as outlined in this book including general rules, care of animals, livestock and showmanship, etc.
7. All members are required to attend fair & pen set-up on Thursday before fair 6:00 p.m.
8. All members are required to attend fair cleanup on Monday following the fair at 9:00 a.m.
9. FFA members who wish to show projects in the Creative Arts departments must enter their exhibits in the Open Show, unless they are also enrolled in 4H.
10. All members must show in official dress OR khakis and official FFA shirt (as approved by the FFA instructor).
11. All members must supply their own show harness.

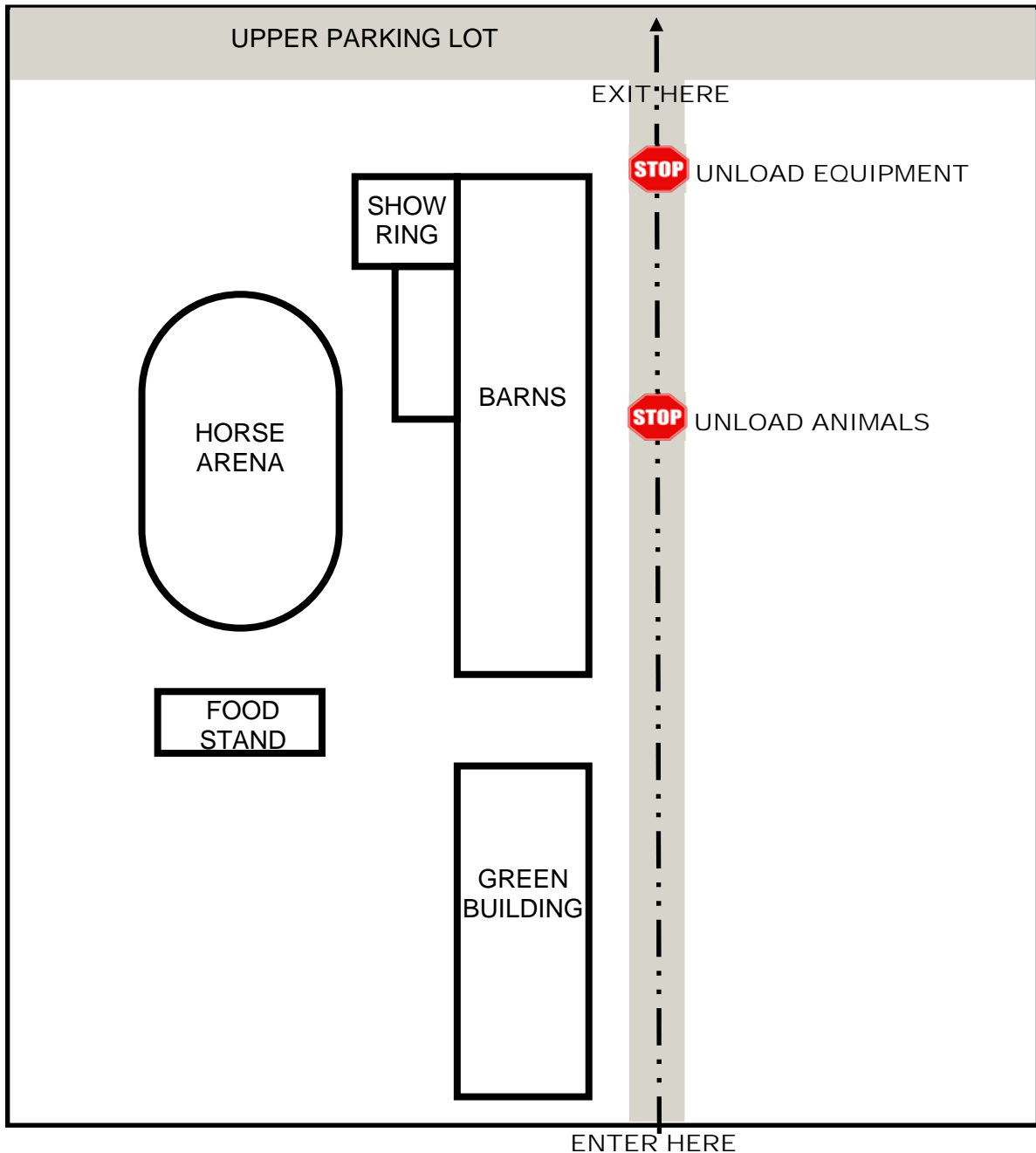


FAIR TRAFFIC PATTERN FOR LOADING & UNLOADING LIVESTOCK

Enter the fairgrounds on move-in day (Sunday) using the West Logan Street Entrance shown below. PLEASE DO NOT enter through Mill Pond Road, as this will back up traffic and cause unnecessary congestion.

Once animals are unloaded, all trucks and trailers will move to the end of the barns/show ring to unload equipment and show boxes. Trucks and trailers will leave the park by exiting through the upper parking lot (Mill Pond Road).

NOTE: The upper parking lot is owned by the Reedsville Fire Company. If you park in this upper lot on Sunday night, or throughout fair week, you may be charged for parking by the Reedsville Fire Company. They will not accept the 4-H parking passes that are available in the Extension Office.



DAIRY CATTLE

1. All members must be enrolled in 4-H by March 31, 2018.
2. All members are required to attend mandatory pen set up on the Thursday before fair.
3. Project books must be turned in to leaders at pen set up. Failure to turn in a book will result in disqualification to show at the Mifflin County Youth Fair. Books must be up to date and all parts completed.
4. Certified veterinary inspection **MUST** be issued within 30 days prior to fair.
5. Animals showing signs of contagious or infectious disease will be disqualified and removed from fair grounds. (This includes ring worm, warts, lice, mange)
6. Dairy animals in milk **MUST** be drug free.
7. 4-H members **MUST** show in showmanship in order to compete in the type classes.
8. Members **MUST** attend 5 meetings or activities per project year.
9. All members are expected to bring project books and binders to each meeting.
10. All project animals **MUST** be owned by the 4-H member or properly leased by June 1.
11. Each member will identify their project animals with the Extension Office by June 1.
12. Positively no professional fitting. Fitting may be done with the help by other **CURRENT** club members **ONLY!** We encourage older members to help younger members. First and Second year members may have help from a parent or immediate family (brother/sister). Third year and up must fit 100%.
13. All members **MUST** be dressed in white tops and pants to compete in the show. You are representing yourself, your club, your family and the dairy industry so please dress tastefully and modestly while in the show ring.
14. Fair cleanup is the Monday following the fair at 9:00 a.m. Please come and help clean up.

DAIRY CATTLE SHOWMANSHIP CLASSES

First Year Showman

Junior Showman (9 to 11 years old)

Intermediate Showman (12 to 14 years old)

Senior Showman (15 and up)



Classes listed below are to apply to each of the following breeds:

- Ayshire
- Brown Swiss
- Guernsey
- Holstein
- Jersey
- Milking Shorthorn
- Linebacks

CLASSES

- Spring Heifer Calf (born between March 1, 2018 and May 31, 2018)
- Winter Heifer Calf (born between December 1, 2017, and February 28, 2018)
- Fall Heifer Calf (born between September 1, 2017 and November 30, 2017)
- Summer Yearling Heifer (born between June 1, 2017 and August 31, 2017)
- Spring Yearling Heifer (born between March 1, 2017 and May 31, 2017)
- Winter Yearling Heifer (born between December 1, 2016 and February 28, 2017)
- Fall Yearling Heifer (born between September 1, 2016 and November 30, 2016)
 - Junior Champion Female and Reserve Junior Champion Female
- Fall Yearling Heifer, in milk (born between September 1, 2016 and November 30, 2016)
- Dry Cow Senior, 4 Years and under (born on or after September 1, 2013)
- Dry Cow Senior, 5 years and over (born prior to September 1, 2013)
- Junior 2 year old (born between March 1, 2016 and August 31, 2016)
- Senior 2 year old (born between September 1, 2015 and February 28, 2016)
- Junior 3 year old (born between March 1, 2015 and August 31, 2015)
- Senior 3 year old (born between September 1, 2014 and February 28, 2015)
- Cow 4 year old (born between September 1, 2013 and August 31, 2014)
- Cow 5 Year old (born between September 1, 2012 and August 31, 2013)
- Cow 6 year old and older (born prior to September 1, 2012)
 - Senior Champion Female and Reserve Senior Champion Female
 - Grand Champion Female and Reserve Champion Female
- 150,000 lb. Cow (Lifetime Production)
- Junior Best Bred and Owned Three Females by Exhibitor
- Senior Best Bred and Owned Three Females by Exhibitor
- Produce of Dam
- Daughter Dam

DAIRY FEEDER CATTLE

- 1) All members will show and sell their animals in a club or county 4-H shirt, NO exceptions!
- 2) ALL EXHIBITORS MUST BE ENROLLED IN 4-H BY MARCH 1.
- 3) Each exhibitor is limited to one (1) Dairy Feeder Calf.
- 4) Dairy feeder calves must be born after January 15 and before March 15 of fair year. Calves are recommended to be in care of the member from 3 days to one week of age. Calf must be under direct care of 4-H'er by March 15.
- 5) Dairy feeder calves must be 100% Holstein breed bloodline (red & white or black & white).
- 6) DAIRY FEEDER CALVES MUST BE MALE AND BE CASTRATED (CUT OR BANDED) PRIOR TO CENTRALIZED TAGGING IN APRIL. CALVES NOT CASTRATED WILL NOT BE IDENTIFIED AS A 4H OR FFA PROJECT.
- 7) CALVES MUST BE FREE OF ANY TESTICULAR TISSUE AND HEALED TO SHOW AT THE FAIR OR THEY WILL BE DISQUALIFIED AT FAIR REGISTRATION.
- 8) All dairy feeder calves must be naturally polled or properly dehorned, WITH NO GROWTH or will be disqualified!
- 9) Dairy feeder calves must attend centralized identification, second Saturday in April, 9:00-10:30 AM and come off trailer to be weighed-in.
 ** DAIRY FEEDERS MUST HAVE A STARTING WEIGHT OF UNDER 300 lb. or it will not be identified to be a 4-H/FFA project. **
- 10) NO IMPLANTS!
- 11) Dairy feeder calves must weigh at least 300 lbs. at fair weigh-ins. All calves under this weight will be taken home. NO RE-WEIGHS!
- 12) Dairy feeders must have a rope halter and neck collar with tie on at all times. The rope halter becomes property of the new owner at the conclusion of the public livestock auction.
- 13) If an exhibitor cannot handle his/her steer they will be disqualified from the show and sale, and they will be asked to remove the animal from the fair grounds.
- 14) If the exhibitor cannot show or sell his/her animal due to a personal medical reason, he/she will not be eligible for the showmanship competition but will be eligible to use a substitute showman for the type competition.
- 15) 4-H and FFA exhibitors MUST show in the showmanship class in order to compete in the type class.
- 16) PEN SET UP IS MANDATORY IN ORDER TO BE ABLE TO SHOW AT THE FAIR – PLAN VACATIONS AROUND PEN SET UP
- 17) Positively no UNLOADING of ANIMALS AT THE YOUTH FAIR prior to the check-in/Weigh-in time (Sunday of Fair from 1-8 PM, there is NO MONDAY check-in).

- 18) All animals will be vet checked upon entering the fairgrounds. Any animal showing signs of sickness or disease will be disqualified and removed from the fairgrounds.
- 19) No 4-H / FFA Youth will be allowed to stay overnight in the barns the week of Fair.

DAIRY FEEDER CALF HEALTH REQUIREMENTS

- A. All cattle must be accompanied by a Certificate of Veterinary inspection (CVI), signed by an accredited veterinarian. The CVI must be issued within 30 days of admission to the show.
- B. It is strongly recommended that all cattle entering the show be immunized against IBR, PI3, BVD and BRSV.
- C. No animals showing clinical signs of contagious or infectious disease: including active ring worm, warts, lice and mange, will be admitted to any show or fair event.
- D. If anything other than a food subsidy needs to be given to the steer at the Fairgrounds you must report to the leaders or advisor and Extension Educator prior to usage for approval. It is the 4-H member responsibility to ensure that all health requirements are satisfactorily completed.

MEMBER/MEETING REQUIREMENTS

- ALL MEMBERS MUST BE SIGNED UP BY MARCH 1 USING ONLY THE PAPER ENROLLMENT FORM.
- All members must attend 4 meetings, NO EXCEPTIONS! (No April Meeting)
- ALL Members must complete the Meat Quality Assurance Training, annually!
- Books must be turned in at pen set up. The books must be complete to show!!

DAIRY FEEDER MARKET CLASSES

Light Weight	Light Middle Weight	Light Heavy Weight
Medium Light Weight	Middle Weight	Medium Heavy Weight
Heavy Light Weight	Heavy Middle Weight	Heavy Weight



BEEF CATTLE

1. The calf must be under the care of the club member by January 1st. Members will be required to bring the steer to the Youth Park in Reedsville for a centralized tagging and weigh in. The same steer will be shown at the Youth Fair in August.
2. Centralized Identification will be the third Saturday of January (weather permitting) or the following Saturday (weather permitting) or consecutive Saturday's until complete. Identification will take place from 8:00 AM until 10:00 AM. This is a mandatory tagging and weigh in, therefore, ALL 4-H Beef Club members must be present in order to show at the Youth Fair in August.
3. Steers will be shown by weight class, regardless of beef breed. All steers must weigh a minimum of 1,000 lb. to be eligible to show.
4. Market steer must be properly castrated by December 31 and healed by fair or they will be shown as stags and given a merit ribbon and sold at the end of the market steer sale with no buy-back!
5. No nurse cows may be used.
6. Each club member may show only one steer at county show.
7. Parents are NOT allowed in the show ring except for appointed ring personnel.
8. If an exhibitor can not handle his/her steer, they will be disqualified from show and sale. You will be asked to remove the animal from the fairgrounds.
9. If the exhibitor can not show or sell his/her animal due to a personal medical reason, he/she will not be eligible for the showmanship competition but will be eligible to use a substitute showman for the type competition.
10. All substitute showmen must be a Baby Beef Club member and all substitutions must be approved by the Beef Club leaders and the 4-H Extension Educator.
11. At time of registering at the show, the club member will designate whether or not the steer is to be sold. Steers may not be withdrawn after registration.
12. Grand champion and reserve champion must be sold at the Mifflin County Youth Fair Livestock Sale.
13. Steers must have a rope halter (furnished by the member) as well as a neck collar with lead rope on them at all times during the Youth Fair. The rope halter will become the property of the new owner at the conclusion of the Jr. Livestock Sale, however the neck halter can be removed after the animal is sold.
14. Members are encouraged to feed an additional steer if they so desire and show at the Keystone Livestock Exposition. This is not in violation of rule #6.
15. Additional (buddy) steers will not be shown or sold at the Jr. Livestock Sale.

MEETING REQUIREMENTS

- A. All members must attend meetings in one of the following combinations to be eligible for the fair.
- B. Five meetings per year
- C. Four meeting and one activity per year
- D. Three meetings and two activities per year
- E. Club meetings run from October through July and there are several activities.
- F. All Beef Club members are required to bring project books to each meeting.
- G. If a member carrying a beef project misses a club meeting it is the 4-H members' responsibility to contact a 4-H leader about the information they missed.
- H. All Beef Club members are required to learn the 4-H pledge, colors, and motto to recite them at one monthly meeting.

BOOK REQUIREMENTS

- A. Project book must be signed by a Beef Leader or designated teen leader after completion of each activity.
- B. Failure to complete and turn in project books on time will result in disqualification to show beef at the Mifflin County Youth Fair.
- C. Project books are due the night of pen set up.

SHOWMANSHIP COMPETITION REGULATIONS

- A. Beef Club members will participate in the Showmanship Competition with the Grand Champion Beef Showman competing in the Supreme Showmanship Competition scheduled for Friday of Fair week beginning at 7:00 PM.
- B. Beef Showmanship Classes will be as follows: First Year Showman, Jr. Showman (9-11 years old), Intermediate Showman (12-14 years old), Senior Showman (15 and older), and FFA. All divisions will compete for the Grand Champion Beef Showman.
- C. There will be no judging of Fitting. However, the following rules still apply as fitting will be a part of the judges decision for the Showmanship scores.
 - i) Positively no professional fitting. Fitting may be done with the help by other CURRENT club members, ONLY! We encourage older members to help younger members.
 - ii) First and second year members may have help from a parent or immediate family (brother/sister).
 - iii) Third year and up must fit 100% of the steer after the animal is washed or 3 hours prior to the show.
- D. 4-H and FFA exhibitors MUST show in the grooming and showmanship contest provided it has been carried as a project.
- E. Beef Club Members MUST use their own animal for showmanship.

AWARDS

- A. All awards are approved on a yearly basis by the sponsor, therefore are not guaranteed.
- B. Awards will be obtained through Mifflin County Cooperative Extension Office.
- C. Requests to seek sponsors for additional awards must be submitted to the Extension Office two weeks prior to Fair week for approval.

ANIMAL GOALS

- A. To select an animal that should be ready for market by the middle of August
- B. To select an animal that will peek between 1,100 lbs and 1,300 lbs dependent upon the breed

4-H CODE OF CONDUCT

Serious action will be taken if 4-H members or parents are caught violating Beef Club rules or the 4-H Code of Conduct. If the rules or code are violated, the following steps can be taken:

- The 4-H'er(s) may be barred from participating in national, state, regional, district, and county events for up to a year.
- When a violation occurs at a competitive event, 4-H members may be disqualified from the contest and ineligible for any awards. Competition in later contests may also be barred.
- If Pennsylvania laws are violated, the case may be referred to the police.

YOUTH FAIR

- A. Steers **MUST** weigh a minimum of 1,000 lb at fair weigh-ins to show. All underweight animals will be disqualified and will be immediately sent home.
- B. All members will show and sell their animals in a club or county 4-H shirt, no exceptions!
- C. All animals must be “sound” animals for their intended market purpose or it will be ineligible for the buy-back program.
- D. All exhibitors will take 100% proper feeding and care of your animal while at the fair.
- E. All bedding will be straw, sawdust or shavings, no paper bedding permitted.
- F. Music is permitted in the livestock barn with mutual respect, but must be appropriate and not interfere with others. All music will be turned off during all shows.
- G. All fitting of animals must be done in a designated area, assigned by the Fair Committee.
- H. All members are expected to present their animal for show and sale. Any member not present to show their animal will be ineligible to sell that animal.
- I. Overnight passes will be honored when there is a commitment from a chaperone.
- J. Members will not take part in water battles in the barns.
- K. No shockers will be permitted at fair.
- L. No dogs are permitted on the fairgrounds, with the exception of service dogs. Project dogs are permitted on the grounds for the day of show, only. **NO** project dogs are permitted in the barns!!

HEALTH REQUIREMENTS

- A. All cattle must be accompanied by a Certificate of Veterinary inspection (CVI), signed by an accredited veterinarian. The CVI must be issued within 30 days of admission to the show.
- B. All cattle are highly recommended to be vaccinated against Bovine Viral Diarrhea (BVD) with USDA approved product given according to label directions prior to the centralized identification, and strongly recommended for one booster shot given no more than 180 days prior to the start of the Fair. A written record of said vaccinations shall be presented to fair officials prior to unloading of the animal at the fairgrounds. BVD vaccine may be part of a multivalent vaccine against shipping fever.
- C. It is strongly recommended that all cattle entering the show be immunized against IBR, PI3, BVD and BRSV.
- D. No animals showing clinical signs of contagious or infectious disease: including active ring worm, warts, lice and mange, will be admitted to any show or fair event.
- E. If anything other than a food subsidy needs to be given to the steer at the Fairgrounds you must report to the leaders or advisor and Extension Educator prior to usage for approval.
- F. It is the 4-H member’s responsibility to ensure that all health requirements are satisfactorily completed.

MARKET STEER CLASSES

Light Weight	Light Middle Weight	Light Heavy Weight
Medium Light Weight	Middle Weight	Medium Heavy Weight
Heavy Light Weight	Heavy Middle Weight	Heavy Weight

COMMERCIAL BEEF HEIFER

- 1) All exhibitors must be enrolled members of the 4-H or FFA programs of Mifflin County.
- 2) Each exhibitor is limited to one (1) heifer.
- 3) Heifers must be in exhibitor's possession by June 1 with completed lease papers by June 1.
- 4) The Heifer show will be Wednesday of Fair at 6:30 PM.
 - Final classes will be set at the fair.
 - If more than 3 heifers of the same breed are registered, a new class will be made.
- 5) No nurse cows will be permitted.
- 6) Heifers must have a USDA issued metal tag or 15 digit Animal Identification number with 840.
- 7) Members must attend 3 meetings (which will be the 2nd Thursday of each month), complete the appropriate record books and follow the 4-H Code of Conduct and attend MQA training.
- 8) Members are required to learn and recite the 4-H pledge, colors and motto.
- 9) If a member cannot handle his/her heifer, they will be asked to remove the animal from the fairgrounds, thus disqualified from the show.
- 10) Heifers must have a rope halter and neck collar with a lead rope on at all times during the fair.
- 11) There will be no judging of showmanship or fitting but showmanship and fitting are part of the overall judging of the heifer. All awards for the show will be ribbons.
- 12) Positively NO professional fitting. Fitting may be done with the help by other current members.
- 13) Heifers must be fed properly and taken care of everyday and this includes their stay at the Fair.
- 14) Parents are not allowed in the show ring, except for appointed ring personnel.
- 15) No animals showing clinical signs of contagious or infectious disease, including active ringworm, warts, lice or mange will be admitted to the Fair.
- 16) Heifers will enter the fairgrounds on Sunday of Fair from 1:00-8:00 PM.
- 17) Heifers will be dismissed from the fairgrounds on Friday of Fair no earlier than 9:00 PM.

HEIFER CLUB REQUIREMENTS

- All cattle must be accompanied by a Certificate of Veterinary Inspection, signed by an accredited veterinarian within 30 days prior to the fair.
- A current rabies vaccination administered by a licensed vet is required for animals 3 months of age or older. A certificate must accompany the animal or be included in the CVI.
- It is strongly recommended that heifers be immunized with IBR, P13, BVD, BRSV.
- A signed and witnessed statement of the vaccinations must accompany the CVI specifying the biologics used, date of administration and complete identification of the animal.

COMMERCIAL BREEDING HEIFERS CLASSES

* No Nurse Cows allowed

Spring Yearling	March 1, 2017 – May 31, 2017
Summer Yearling	June 1, 2017– August 31, 2017
Fall Calves	September 1, 2017 – December 31, 2017
Spring Calves	January 1, 2018 – April 30, 2018

MARKET LAMB

- 1) All exhibitors must be enrolled by March 31st.
- 2) All members will show and sell their animals in a club or county 4-H shirt, NO exceptions!
- 3) Each exhibitor is limited to tag two (2) market lambs and show two (2) market animals.
- 4) All animals must be owned by May 1 and identified at the Centralized Identification the first Saturday in May at the Youth Park from 9:00-10:00 AM.
- 5) Market lambs must be wether or ewe lambs. Lambs must have a scrapie tag prior to Centralized Id.
- 6) Tails must be docked.
- 7) All wethers must be properly castrated by May 1st. All animals must be free of any testicular tissue and healed to show at the Fair or they will be disqualified at registration.
- 8) Market lambs MUST be registered at Fair on Sunday from 1-8 PM (there is NO livestock entry on Monday of Fair). Lambs will be weighed-in as soon as they get off the trailer. * Positively NO unloading of animals prior to check-in/weigh-in times or animals will be disqualified!!
- 9) Market lambs must weigh 80 lb or over or will be sent home. Market animals with yearling teeth showing will be disqualified. No re-weighs!
- 10) ALL lambs must be slick shorn prior to weigh-ins.
- 11) If the lamb does not make fair, members are still eligible to show in showmanship.
- 11) Any member not present to show or sell their animal will be ineligible to participate and the animal will immediately leave the fairgrounds. This is a fair rule and will be strictly enforced.
- 12) 4-H exhibitors MUST show in showmanship to compete in the type competition.

MARKET LAMB HEALTH REQUIREMENTS

- A. All animals must have a health certificate, signed by an accredited veterinarian. The animals must be examined and certificates issued within 30 days of the opening date of the show and include the statement "Flock of Origin also examined and found free from any contagious or infectious disease."
- B. Animals showing clinical signs of contagious or infectious disease (may include caseous lymphadenitis, sore mouth, active ring worm, foot rot, warts, lice or mange) will be disqualified.

MEMBER/MEETING REQUIREMENTS

- A. All members must be signed up by March 31st.
- B. All members must attend 4 meetings in order to eligible to compete at the fair.
- C. All books must be complete and turned in on time or will be disqualified to show.
- D. All members are required to attend mandatory pen set up, Thursday before Fair.

MARKET LAMB CLASSES

Light Weight	Light Middle Weight	Light Heavy Weight
Medium Light Weight	Middle Weight	Medium Heavy Weight
Heavy Light Weight	Heavy Middle Weight	Heavy Weight

SWINE

ATTENDANCE REQUIREMENTS

- A. Swine club members must attend 6 meetings or activities per project year to be eligible to show at the Youth Fair. All members are required to attend the Mandatory Pen Set-up the Thursday before Fair.

PROJECT REQUIREMENTS

- A. All 4-H members must be signed-up no later than March 31.
- B. Only two (2) swine can be used as project animals per project year (barrows or gilts).
- C. All project animals must be owned by May 1.
- D. All swine will be present at the Centralized Identification on May 5 between 8-10 AM at the Youth Park. Tagging will occur on the trailer and NO animals will get off the trailer.
- E. All Swine must have required testing as stipulated by the Pennsylvania Department of Agriculture to show at the Youth Fair.
- F. All castrations must be done properly that no testicular development is present at fair.
- G. A Certificate of Veterinary Inspection (CVI) must be issued within 30 days prior to the fair.
- H. Health certificates and project books must be turned in to leader by the Pen Set-up 8-2-2018
- I. It is the 4-H members' responsibility to insure that all health requirements are completed.
- J. Animals showing signs of sickness or disease be disqualified and removed from the fairgrounds.
- K. Animals that will be slaughtered shall not receive any treatment with drugs or biologics within the withdrawal time prior to slaughter. Withdrawal for drugs and biologics are all stated on the directions for use. Label directions must be followed at all times.
- L. Upon slaughter if there is an issue with the carcass that causes the meat to be condemned, the member will be financially responsible for the loss.
- M. Any member not present to show their animals will be ineligible to sell that animal. The animal will be asked to leave the fairgrounds immediately following the show. Members are expected to sell their project animal at the public livestock auction (Saturday of Fair at 10:00 AM).
- N. 4-H exhibitors MUST show in the grooming and showmanship competition along with type.

PROJECT AND RECORD BOOKS

- A. All members must keep the record book up to date and have all parts completed, in order to be able to show or sell the animals at the fair.
- B. Members are expected to bring their project books to each meeting.
- C. All members must complete an annual Meat Quality and Ethics Training in order to show.

YOUTH FAIR DRESS CODE REQUIREMENT

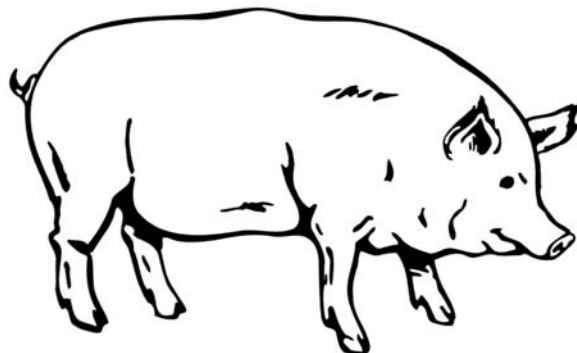
- A. ALL members will show in a 4-H shirt or the sponsored sale shirt. All members must sell their animals in the bank sponsored sale shirt. NO Exceptions!

WEIGHT LIMITS

- A. All swine will be received at the Youth Fair Sunday between 1:00 and 8:00 PM.
- B. Positively NO UNLOADING of animals prior to the check-in/weigh-in times OR animals will be DISQUALIFIED!! This rule will be strongly enforced!
- C. The weight limit will be 230-300 lb. to be shown as a market animal.
- D. Each animal will be weighed only once. Positively no re-weighs!
- E. Swine that do not weigh 230-300 lb. will be loaded back on the trailer immediately and sent home.
- F. Any member that completes the project requirements but animals do not make weight, may show in the showmanship competition using another members' animal.

MARKET SWINE CLASSES

Light Weight	Light Middle Weight	Light Heavy Weight
Medium Light Weight	Middle Weight	Medium Heavy Weight
Heavy Light Weight	Heavy Middle Weight	Heavy Weight



DAIRY AND COMMERCIAL GOATS

GENERAL RULES

- A. All members will show their animals in a club or county 4-H shirt, NO exceptions!
- B. All dairy goats must have required testing as stipulated by the Pennsylvania Department of Agriculture. All dairy goats must have a USDA scrapie id tag or tattoo.
- C. Absolutely NO bucks.
- D. All Dairy goats are highly encouraged to be disbudded
- E. Members must attend 3 meetings and 1 activity per project year to be eligible for Fair.
- F. Members must know pledge, motto and colors.
- G. Members must complete a record book to best of knowledge and ability.
- H. Members must have goats at tagging the first Saturday in May at the Youth Park, 9-10 AM.
- I. Mifflin County Youth Fair requires that all animals must enter the fairgrounds Sunday 1-8 PM.
- J. 4-H and FFA exhibitors MUST show in the grooming and showmanship competition.
- K. Positively no UNLOADING of ANIMALS AT THE YOUTH FAIR prior to the check- in/Weigh-in time (Sunday prior to 1 PM, or the animals will be disqualified).
- L. Any animal showing signs of sickness or disease will be disqualified and removed from the fairgrounds.

MILK DAIRY GOATS

- A. Member may tag a Maximum of 3 goats to show in any combination.
For example, 3 dairy goats, or 2 dairy goats and 1 market goat, or 1 dairy goat and 2 market goats.
- B. All goats not bred by the exhibitor shall be owned by the exhibitor by May 1, except goats that have freshened before the show date they must be owned by the exhibitor and registered with club leaders before March 31 of the current year.
- C. All Dairy goats must be registered by the first Saturday in May to be eligible to show.
- D. There will be a MANDATORY 12 HOUR MILK OUT before start of the show.

SPECIAL SUGGESTIONS

A milk goat should enter milk before the animal reaches TWO (2) years of age. If an animal has not entered lactation (milking) at least once by its 2nd birthday, the judge may place the animal lower than a blue ribbon in the class.

DAIRY GOAT BREEDS

Alpine, Saanen, LaMancha, Nubian, Nigerian, Pygmy, Oberhasli, Toggenberg, and Mixed

COMMERCIAL GOAT OR NON-DAIRY GOAT BREEDS

Spanish Meat Goat, Angora, Boer, Keiko, Kinders, Tennessee Meat and Mixed Breed

DAIRY & COMMERCIAL GOAT CLASSES

Kids—up to 6 months

Kids—over 6 months and under 1 year

Doe—under 2 (never been in milk)

Senior Doe—over 2 years (in milk)

Best Udder

Dam and Daughter

Best Doe in show (will consist of the champion doe in each breed)

MARKET GOAT

GENERAL RULES

1. All members will show their animals in a club or county 4-H shirt, and sell their animal in the sponsored fair shirt. NO Exceptions!
2. All market goats must have required testing as stipulated by the Pennsylvania Department of Agriculture. All does must have a must have a USDA scrapie id tag or tattoo.
3. Absolutely NO bucks.
4. Members must attend 3 meetings and 1 activity per project year to be eligible for Fair.
5. Members must know pledge, motto and colors.
6. Members must complete record book to best of knowledge and ability.
7. Members must have goats at tagging the first Saturday in May at the Youth Park, 9-10 AM.
8. Mifflin County Youth Fair requires all animals to enter the fairgrounds Sunday 1-8 PM.
9. Positively no UNLOADING of ANIMALS AT THE YOUTH FAIR prior to the check- in/Weigh-in time (Sunday at 1 PM, or animals will be disqualified).
10. All goats will be immediately weighed-in, as they come off the trailer at the fairgrounds.
11. All 4-H and FFA members must compete in their respective showmanship class.
12. Any animal showing signs of sickness or disease will be disqualified and removed from the fairgrounds.
13. Market Goat Show will be on Monday, August 6, 2018 beginning at 10AM.

MARKET GOATS

- A. A member may tag a Maximum of 2 Market Goats and a total Maximum of 3 goats to show in any combination.
For example, 2 market goats, or 2 market goats and 1 dairy, or 2 dairy goats and 1 market goat
- B. Up to Two (2) Market Goats will be identified at the centralized identification.
- C. All goats will be immediately weighed-in, as they come off the trailer at the fairgrounds.
- D. Market goats MUST weigh 60 lb or over, as long as NO yearling teeth are showing.
- E. NO RE-WEIGHS!! Animals not making weight will be immediately sent home.
- F. Market goats with their yearling teeth will be disqualified at Fair.
- G. Members may show a wether or a doe.
- H. All male market animals must be properly castrated by May 1. The animal must be free of any testicular tissue and healed to show at Fair, or they will be disqualified at registration.
- I. Goats may have horns, at the owner's discretion. It is still highly recommended that goats are dehorned.

MARKET GOAT CLASSES

Light Weight Medium Weight Heavy Weight

POULTRY

1. All Poultry Club members MUST ATTEND either 3 meetings and 1 activity, or 2 meetings and 2 activities per project year to be eligible to show at the Youth Fair. All members are required to attend the Mandatory Pen Set-up the Thursday before fair.
2. All members must be signed up no later than March 31st.
3. Poultry members have a choice of one or more various projects to enter.
 - A. One or two exhibition birds (ex. pullet, cockerel, hen and rooster) - 1 Cage
 - B. A pen of two meat birds
 - C. One or two turkeys, waterfowl or pigeons
 - D. One or two commercial egg layers - 1 Cage
 - E. Embryology project (placed in green building)

This project requires hatching eggs using an incubator—which can be borrowed from the club. A display poster on a three-sided board including pictures of your project, diagrams, and other bits of information you have learned about poultry. You may also set up some type of display in front of the board for added effects. There is an embryology book to fill out and hand in with the display. This display will be placed in the green building during the same time as other green building projects.
4. All exhibition chickens, turkeys, waterfowl and pigeons must be owned by May 1st. Meat birds will come from the club by a specified hatchery and supplied to the members in June.
5. All birds will be tested according to state regulations and have a PDA official leg band on all exhibition and market birds. Leader and poultry techs will make home visits in July.
6. Health papers and project books must be turned in to the leader at pen set up. Project book **MUST** be completed by the Exhibitor in his or her own hand-writing, no exceptions!
7. All exhibition birds **MUST** be entered and housed at the Fair on Sunday of the Fair (Aug 6, 2017) from 1:00-8:00 PM.
8. MARKET bird fair entry/weigh-ins are Wednesday Aug. 8th from 3:00 – 5:00 PM.
9. Market birds will be weighed and banded upon entry. Average weight between both birds need to be between 3-8 pounds to qualify for the show and sale.
10. Each member is responsible for his/her own project animals while at the fair. You will need to supply your own feed containers and a lock or snap to place on exhibition bird cages.
11. No animals showing signs of contagious, infectious disease or external parasites will be admitted to the fair. An owner-endorsed health form must accompany all poultry to the fair.
12. The Poultry Show will take place on Thursday, August 9th at 9:00 AM.
13. All meat birds will be sold at the livestock auction on Saturday.
14. All exhibition birds, except meat birds, are released on Friday after 9:00 PM.
15. All 4-H and FFA members **MUST** compete in showmanship competition in order to compete in the type competition.
16. All members will exhibit in a 4-H or FFA shirt, or a sponsored Fair shirt. All exhibitors that will sell their animal must wear the sponsored Fair Shirt. Failure to do so results in disqualification!
17. Any member not present to show their animals will be ineligible to sell the meat birds.

CLASSES

Bantam Chickens: Champion and Reserve Bantam
Single Comb Clean Leg
Rose Comb Clean Leg
All Other Comb Clean Leg
Featherleg
Game (Modern and Old English)

Large Fowl Chickens: Champion and Reserve Large Fowl
American
Asiatic
All Other Standard Breeds
Continental
English
Mediterranean

Waterfowl: Champion and Reserve Waterfowl
Ducks
Geese

Turkeys

Specialty Poultry: Champion and Reserve Specialty Poultry
Pigeons
Doves
Gamebirds (Quail, etc.)
Peafowl

Market Poultry
Light
Middle
Heavy

Commercial Egg Layers - Champion and Reserve Commercial Egg Layer
Hens
Pullets



RABBIT

1. All members must meet the county 4-H enrollment date (March 31st) and 4-H age requirements.
2. Members must raise, groom, enter, and show their rabbits.
3. Members **MUST** attend at least four (4) of club meetings in order to show.
4. Parents are encouraged to attend the meetings. It is the responsibility of the parent and member to be informed about the content of the meetings, including the meetings that are missed.
5. Members are required to do at least one (1) presentation/demonstration on their project.
6. Each member is responsible for the care of his or her own project animal while at the Youth Fair. This includes providing feed and water containers and other necessities. Rabbits will be asked to leave if they are not cared for properly.
7. Members should be prepared to answer questions posed by the judge about the age, sex, breed, date of purchase, etc. of their animals and also should be able to knowledgeably discuss information from their 4-H Project books.
8. Rabbits will be checked upon entry to the show. Signs of disease or other health problems are grounds for refusing entry, and the animal must be removed from the show grounds by the owner. These health checks will be the responsibility of the 4-H Leader. Decisions made by the 4-H leader will be final. The member may have the option of replacing the excused animals with another project animal.
9. Rabbit Registration: Sunday of Fair, 1:00-8:00 PM (NO Monday entry) Meat Pen and Single fryer weigh-ins will be Sunday immediately upon arrival.
10. Only project rabbits will be housed in the pen area at the Youth Park. **NO EXCEPTIONS!**
11. Positively **NO** penning of animals prior to the 1:00 PM Fair Check-in time or Animals will be disqualified!
12. All members will show in a 4-H/club shirt or provided sale shirt. All market rabbit members **MUST** be in a sponsored sale shirt during the auction. **NO EXCEPTIONS!**
13. 4-H and FFA exhibitors **MUST** show in a showmanship class.
14. At the first leader/parent meeting of each year these rules will be reviewed and revised. Any leader, member, or parent may make suggestions for change.

BREED RABBIT RULES

- A. Exhibitor is limited to tattoo 4 breed rabbits and show 3 breed rabbits. All breed rabbits must be at the Centralized Identification 1st Saturday in May from 10-11 AM at the Youth Park. Attendance for ALL breed animals are mandatory; NO ENTRIES will be accepted any other way!!
- B. All rabbits must have a clear form of identification (i.e. tattoo).
- C. A doe and litter will be considered one rabbit entry (litter must be 28 days or older).
- D. Breed classes at the Youth Fair will consist of: Junior Doe or Buck (under 6 mo.); Senior Doe or Buck (over 6 mo.); Doe and Litter in each A.R.B.A. breed. These classes will also be available in a mixed breed category.

MEAT PEN RULES

- A. Definition of a Meat Pen: 4-H member is the owner/breeder and will show a pen of 3 rabbits to be judged on breed and uniformity and sold at the fair.
- B. A 4-H member **MUST** choose to compete in the meat pen class or the single fryer class, but cannot compete in both.
- C. Up to 2 Does will be identified at the May tattooing to be used for this Litter.
- D. The meat pen or a maximum of 6 rabbits will be tattooed at the Mandatory identification on July 10 from 5:30-6:30 PM at the show ring of the Mifflin County Youth Park.
- E. The member will select 3 rabbits to bring to the fair. Rabbits must weigh between 3.5-5.5 lbs. each or will not qualify and will be sent home.
- F. All rabbits must have a clear form of identification (i.e. tattoo).
- G. In order to show a meat pen, the exhibitor must enter at least one (1) rabbit or one (1) cavy in a breed class. Members must present their meat pen rabbit for show and sale.
- H. All members showing and selling a MARKET RABBIT **MUST** attend a meat quality assurance training.

SINGLE FRYER RULES

- A. A 4-H member **MUST** choose to compete in the meat pen class or the single fryer class, but cannot compete in both.
- B. A limit of 2 rabbits will be tattooed at the Mandatory Identification on July 11 from 5:30-6:30 PM at show ring of the Mifflin County Youth Park.
- C. You will select 1 single fryer to bring to the Fair.
- D. Market classes will be a single Fryer not over 10 weeks old and weighing at least 3.5 -5.5 pounds. If the rabbit weighs under 3.5 lbs. or over 5.5 lbs. it will be sent home.
- E. In order to show a limit of one (1) single fryer, the exhibitor must enter at least one (1) rabbit or one (1) cavy in a breed class. Members must present their rabbits for show and sale.
- F. All members showing and selling a MARKET RABBIT **MUST** attend a meat quality assurance training.

BREED RABBIT CLASSES

****COMMERCIAL AND FANCY TYPES DESIGNATED BY THE A.R.B.A.****

Pure Breed

Adult Doe (over 6 months of age)
 Adult Buck (over 6 months of age)
 Junior Doe (under 6 months of age)
 Junior Buck (under 6 months of age)
 Doe and Litter

Mixed Breed

Adult Doe (over 6 months of age)
 Adult Buck (over 6 months of age)
 Junior Doe (under 6 months of age)
 Junior Buck (under 6 months of age)
 Doe and Litter

MARKET RABBIT CLASSES

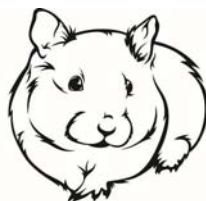
Meat Pen (Pen of 3 rabbits)
 Single Fryer

CAVY

1. All members must meet the county 4-H enrollment date (March 31st) and 4-H age requirements.
2. Members must raise, groom, enter, and show their cavy.
3. Members **MUST** attend at least four (4) of club meetings in order to show.
4. Parents are encouraged to attend the meetings. It is the responsibility of the parent and member to be informed about the content of the meetings, including the meetings that are missed.
5. Members are required to do at least one (1) presentation/demonstration on their project.
6. Each member is responsible for the care of his or her own project animal while at the Youth Fair. This includes providing feed and water containers and other necessities.
7. Members should be prepared to answer questions posed by the judge about the age, sex, breed, date of purchase, etc. of their animals and also should be able to knowledgeably discuss information from their 4-H Project books.
8. Cavy will be checked day of the show. Signs of disease or other health problems are grounds for refusing entry, and the animal must be removed from the show grounds by the owner. These health checks will be the responsibility of the 4-H Leader. Decisions made by the 4-H leader will be final. The member may have the option of replacing the excused animals with another project animal.
9. Cavy Registration: Registration of cavy must be completed prior to fair by contacting the leader. Cavy Check In for fair will be at 7 AM day of show.
10. All members will show in a 4-H/club shirt. **NO EXCEPTIONS!**
11. 4-H and FFA exhibitors **MUST** show in a showmanship class.
12. At the first leader/parent meeting of each year these rules will be reviewed and revised. Any leader, member, or parent may make suggestions for change.

BREED CAVY RULES

- A. Exhibitor is limited to 4 cavies for show and registration. All breed rabbits must be at the Centralized Identification 1st Saturday in May from 10-11 AM at the Youth Park. Attendance for ALL breed animals are mandatory; NO ENTRIES will be accepted any other way!!
- B. Cavy will be photographed.
- C. Breed classes at the Youth Fair will consist of boars and sows.



HORSE AND PONY

GENERAL RULES

1. The program will run from January 1 to County Show.
2. The club will follow ALL rules in the 2016 State Horse & Pony Rulebook.
3. Enrollment deadline is March 31 for the member and June 1 for the horse/pony.
4. A member must attend 4 meetings and 3 activities and 1 community service to be eligible to compete at the county show.
5. A member must attend an ethics training in order to compete at the county show.
6. Grooming and Showmanship is a county show class requirement.
7. A member must pay the \$50 cost recovery fee by June 1 or fundraise \$100.
8. It is the member's responsibility to have appropriate safety equipment and attire during ALL 4-H events. This includes:
 - Approved riding helmet must be worn while riding during any event
 - Proper attire: No sleeveless shirts or cut t-shirts. No crop tops or tank tops
 - Must wear jeans
 - Must wear boots with a 1 inch heel
9. Members must know pledge, motto and colors.
10. Members must complete a record book and return it to the leader by July 8 to be eligible for county show.

YOUTH PARK ETIQUETTE

1. Properly tie your horse in the barn
2. No riding in the barn at any time
3. Do not tie in the livestock show ring
4. Please watch for cribbing and do not allow your horse to do so
5. Stay off the mid-way unless you have permission from your leader
6. Practice sessions for the ring are scheduled by the leader and everyone will be notified. Due to insurance the ring is not open for individual practice.

ANIMAL HEALTH REQUIREMENTS

1. Horse/Pony **MUST** be vaccinated against rabies within the last 12 months and the veterinary report must be turned in prior to the first event with the horse/pony.
2. Coggins test is a requirement and the veterinary report must be turned in prior to the first event with the horse/pony.
3. Any animals showing signs of sickness or disease will be disqualified by any approved leader and asked to be removed from the event or the show.
4. If the member cannot handle his/her horse/pony they will be disqualified from the event or the show and will be asked to leave.
5. If there is rough handling or inappropriate restraining or tying the exhibitor will be disqualified.

DOG

GENERAL RULES

1. Members must be 8 to 18 years of age as of January 1st and be enrolled in the Dog Club by March 31.
2. Must attend 50% of meetings.
3. Members must have dogs registered with the club leader by the first June meeting. After this, dog may only be changed if a veterinarian provides written documentation that it is unfit to continue as the project animal.
4. Written project must be completed and turned in to club leader by the first July meeting. Failure to do so will result in disqualification from show during the Mifflin County Youth Fair.
5. HANDLERS MUST CLEAN UP AFTER THEIR DOGS' WASTES. FAILURE TO DO SO WILL RESULT IN DISQUALIFICATION FROM SHOW AND/OR EXPULSION FROM THE CLUB!
6. ALL dogs must have a proof of rabies submitted to the club leader prior to the first training meeting.
7. Only one handler is permitted for each dog. Two handlers may not use the same dog.
8. Proper equipment as described by the club leader must be used for meetings and show (see checklist).
9. Any member with a dog exhibiting aggressive behavior towards people or other dogs during a club meeting will be asked to excuse their dog from the remainder of that meeting. The member must work with the leader on an individual basis until the dog is determined safe by the parent and leader. The dog can then be reintroduced to club meetings. This does not excuse the 4-H member from meeting participation.
10. Dogs that are in "season" should not be brought to meetings. This does not excuse the 4-H member from meeting participation.
11. All members are required to learn the 4-H Pledge, colors and motto.
12. It is recommended that all members attend Youth Fair Set-up on the Thursday prior to the start of the fair.
13. A parent or other adult must accompany club members (under age 16) to all meetings and activities.

SHOW RULES

1. ALL JUDGES DECISIONS ARE FINAL!
2. Handlers must be clean and tidy in appearance (no holes or rips in clothing), wearing a 4-H shirt. Sneakers are the only acceptable footwear (no slip-ons, no sandals, flip-flops or other open-toed shoes).
3. Members who choose not to participate in the fun show are still eligible for the official show.
4. Dog must always be on a leash and under control.
5. Members who are involved in shows with other animals during this event may still participate; HOWEVER, a responsible person must remain with the dog at all times.

6. Dogs should not be on the fairgrounds more than one hour before or after the show, and are not permitted on the fairway, in the barns or green building.
7. Handlers are permitted and encouraged to use treats during the official show.
8. Dogs may be warmed up by the handler ONLY.
9. Coaching handlers or dogs while they are in the ring is prohibited.
10. Coarse of action for failure to follow these rules:
11. First offense – verbal warning.
12. Second offense – family member asked to leave ringside.
13. Third offense – 4-H member will be disqualified.

DIVISIONS

Below are the general guidelines for placement. Leaders, place members based on both their abilities, as well as their dog's abilities. Superior performance may result in a higher division placing, with parent and member approval.

- Puppy — dogs under 1 year old as of June 1, regardless of member's years in the club.
- Beginner — members for the first time or previous members with a new dog
- Junior — members with the same dog for 2 and 3 years
- Intermediate — members with the same dog for 4 and 5 years
- Advanced — members with the same dog for 6 or more years

CLASSES

- Showmanship — Handlers must know how to present their dogs to the judge in a professional manner. They are critiqued on both grooming and their ability to show the dog.
- Obedience — Dogs are judged on their ability to follow their handlers' commands in a variety of exercises: Heel and figure 8; recall, finish (advanced only); group sit/stay; group down/stay
- Rally — Handlers and dogs complete a course with signs showing various commands. Judging is based on accuracy.

